

# Context Map



**Facility** represents a single clinic



**Doctors** are grouped within a clinic, represents certain specialists



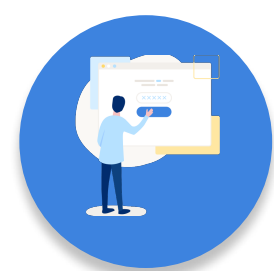
**Addresses** belong to doctors, they represent certain locations/schedules



**Services and Insurances** are address-specific. They are basing on dictionaries which can be fetched exclusively.



**Slots** can be added to a specific address with services as the params.



**Bookings and breaks** can be added to a specific address directly via API, patients can book only in the specified slots.

